

Roxtec R transit with SLA

Multi-cable transit with adaption sleeve for attachment in drilled holes.

The Roxtec R with SLA is a multi-cable transit with sleeve for round holes. The compression is integrated in the transit frame so it seals by expansion. The standard sealing modules are adaptable to cables of different sizes and can be used to build in spare capacity in the transit. The sleeve is threaded and is attached to the structure with a counter nut.



- Area efficient
- Perfect for retrofit
- Quick and easy to install

Product characteristics



Fire rated



Watertight

Structure of installation



Metal

Mounting type



Bolting

Ratings & certificates

Fire

- A-CLASS according to IMO 2010 FTP Code

Tightness

- Water: 2.5 bar (catastrophic)

Frame dimensions

mm/kg

The frame variants below are a limited selection. For the full range of frames and configurations, please visit [roxtec.com](https://www.roxtec.com).

Product	Packing space	Aperture dimensions Ø	Weight	Art. no
R 50 AISI316	30 x 30	50 - 52	0.21	5R00000012875
R 75 AISI316	40 x 40	75 - 77	0.5	R000000751021
R 70 AISI316	40 x 40	70 - 72	0.45	R000000701021
R 100 AISI316	60 x 60	100 - 102	0.8	R000001001021
R 100 GALV	60 x 60	100 - 102	0.8	R000001001018
R 125 AISI316	80 x 80	125 - 127	1.1	R000001251021
R 125 GALV	80 x 80	125 - 127	1.1	R000001251018
R 127 AISI316	80 x 80	127 - 129	1.1	R000001271021
R 127 GALV	80 x 80	127 - 129	1.1	R000001271018
R 150 AISI316	90 x 90	150 - 152	1.6	R000001501021
R 150 GALV	90 x 90	150 - 152	1.6	R000001501018
R 200 AISI316	120 x 120	200 - 202	2.6	R000002001021
R 200 GALV	120 x 120	200 - 202	2.6	R000002001018

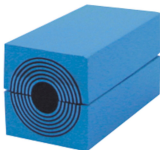


Sealing components

Sealing components



Lubricant



RM module with Multidiameter™



SLA R kit

For detailed information, please visit [roxtec.com](https://www.roxtec.com).

Pre-configured transit kits

mm/kg



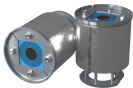
SLA R 100/9 GALV



SLA R 100/16 GALV



SLA R 100/9 AISI316



SLA R 100/1 AISI316



SLA R 100/1 GALV



SLA R 50/4 AISI316



SLA R 50/4 GALV



SLA R 75/1 GALV



SLA R 75/4 GALV



SLA R 100/4 GALV



SLA R 100/16 AISI316



SLA R 50/1 GALV



SLA R 75/4 AISI316



SLA R 75/1 AISI316



SLA R 50/1 AISI316



SLA R 100/4 AISI316

Product	Configuration	Aperture dimensions Ø	Weight	Art. no
SLA R 100/9 GALV	3x (4.0-14.5), 6x (3.5-16.5)	80 - 85	2.9	164413
SLA R 100/16 GALV	16x (3.0-11.0)	80 - 85	2.8	164415
SLA R 100/9 AISI316	3x (4.0-14.5), 6x (3.5-16.5)	80 - 85	2.9	164412
SLA R 100/1 AISI316	1x (28.0-54.0)	80 - 85	2.9	164408
SLA R 100/1 GALV	1x (28.0-54.0)	80 - 85	2.9	164409
SLA R 50/4 AISI316	4x (3.0-11.0)	34 - 40	1.1	164394
SLA R 50/4 GALV	4x (3.0-11.0)	34 - 40	1.1	164395
SLA R 75/1 GALV	1x (9.5-32.5)	42 - 49	1.8	164401
SLA R 75/4 GALV	4x (3.5-16.5)	42 - 49	1.8	164403
SLA R 100/4 GALV	4x (10.0-25.0)	80 - 85	2.9	164411
SLA R 100/16 AISI316	16x (3.0-11.0)	80 - 85	2.9	164414
SLA R 50/1 GALV	1x (10.0-25.0)	34 - 40	1	164393
SLA R 75/4 AISI316	4x (3.5-16.5)	42 - 49	2	164402
SLA R 75/1 AISI316	1x (9.5-32.5)	42 - 49	1.8	164400
SLA R 50/1 AISI316	1x (10.0-25.0)	34 - 40	1.1	164392
SLA R 100/4 AISI316	4x (10.0-25.0)	80 - 85	2.9	164410

The product information provided by Roxtec does not release the purchaser of the Roxtec system, or part thereof, from the obligation to independently determine the suitability of the products for the intended process, installation and/or use.
Roxtec gives no guarantee for the Roxtec system or any part thereof and assumes no liability for any loss or damage whatsoever, whether direct, indirect, consequential, loss of profit or otherwise, occurred or caused by the Roxtec systems or installations containing components not manufactured by an authorized manufacturer and/or occurred or caused by the use of the Roxtec system in a manner or for an application other than for which the Roxtec system was designed or intended.
Roxtec expressly excludes any implied warranties of merchantability and fitness for a particular purpose and all other express or implied representations and warranties provided by statute or common law. User determines suitability of the Roxtec system for intended use and assumes all risk and liability in connection therewith. In no event shall Roxtec be liable for indirect, consequential, punitive, special, exemplary or incidental damages or losses.
The Roxtec products are offered and sold in accordance with the conditions of the Roxtec General Terms of Sales. The latest version of the Roxtec General Terms of Sales can be downloaded from <https://www.roxtec.com/en/about-us/about-roxtec/general-terms-of-sales/>
We reserve the right to make changes to the product and technical information without further notice. Any errors in print or entry are no claims for indemnity. The content of this publication is the property of Roxtec International AB and is protected by copyright.
This document was generated on: 2024-04-27